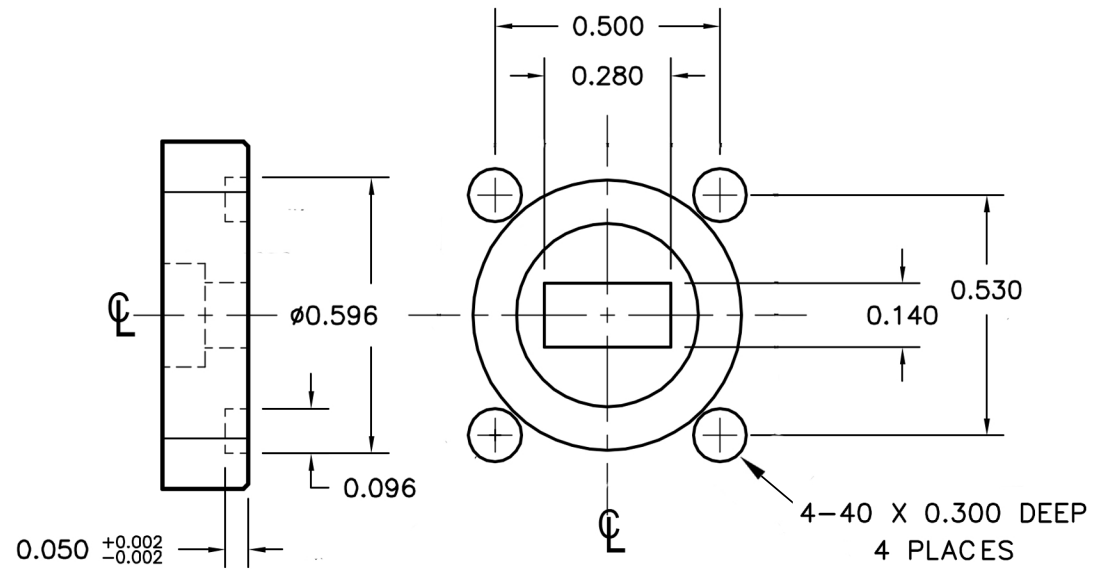
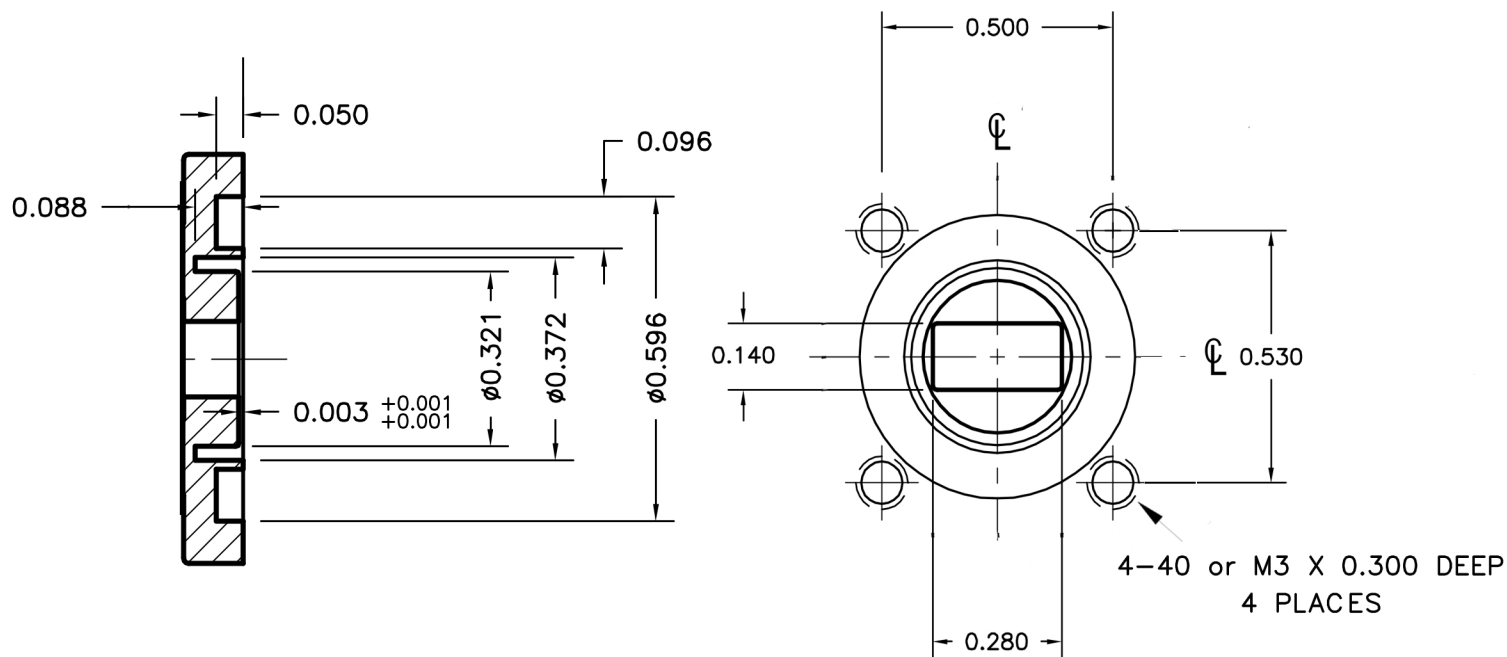


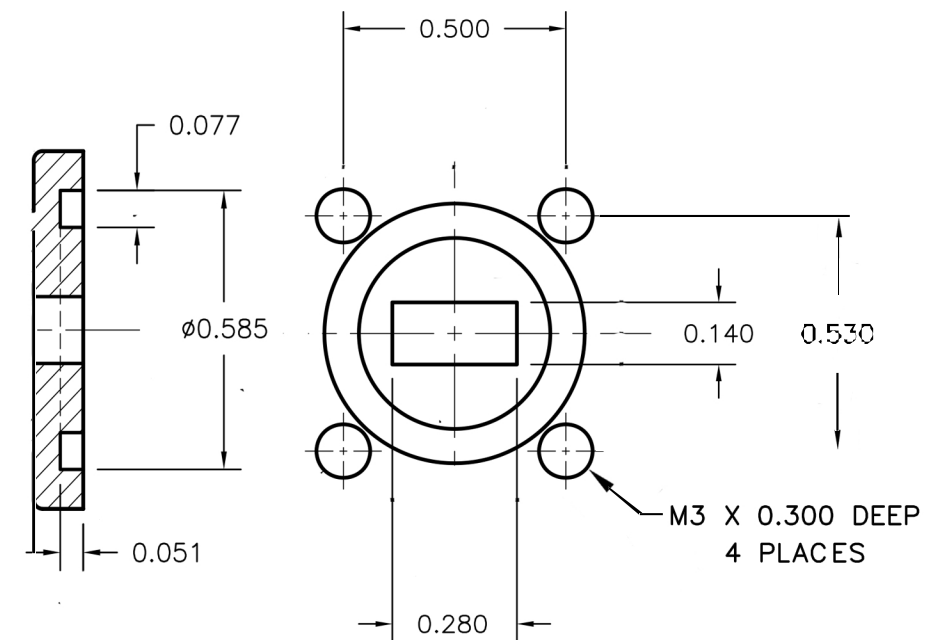
WR28 COVER FLANGE (UGF or UBR)
ORDER CODE: AST28F or AST28FM (METRIC)



WR28 GROOVED FLANGE (UGG)
ORDER CODE: AST280



WR28 CHOKE FLANGE
ORDER CODE: AST28C or AST28CM (METRIC)



WR28 GROOVED FLANGE METRIC THREADS (PBR)
ORDER CODE: AST280M

REVISIONS		APPROVALS			
SYM	DESCRIPTION	DATE	ENGRG	PROD	Q.A.

PROPRIETARY INFORMATION
THIS DOCUMENT CONTAINS PROPRIETARY INFORMATION WHICH SHALL NOT BE REPRODUCED, TRANSFERRED TO OTHER DOCUMENTS, DISCLOSED TO OTHERS, USED FOR MANUFACTURING OR ANY OTHER PURPOSE WITHOUT PRIOR WRITTEN PERMISSION FROM AST.

BREAK ALL CORNERS AND SHARP EDGES

UNLESS OTHERWISE SPECIFIED	DRAWN	MC	05/27/2017
FRACTIONAL ± 1/32	CHECKER		
DECIMAL .XXX ± .010	MECH. ENGR.		
ANGULAR .XX ± .020	ELEC. ENGR.		
	PROJ. ENGR.		
	CHIEF ENGR.		

WR28 FLANGES	
SCALE	

AST MICROWAVE
754 Fortune Crescent
Kingston, ON
K7P 2T3, Canada
613-384-3939

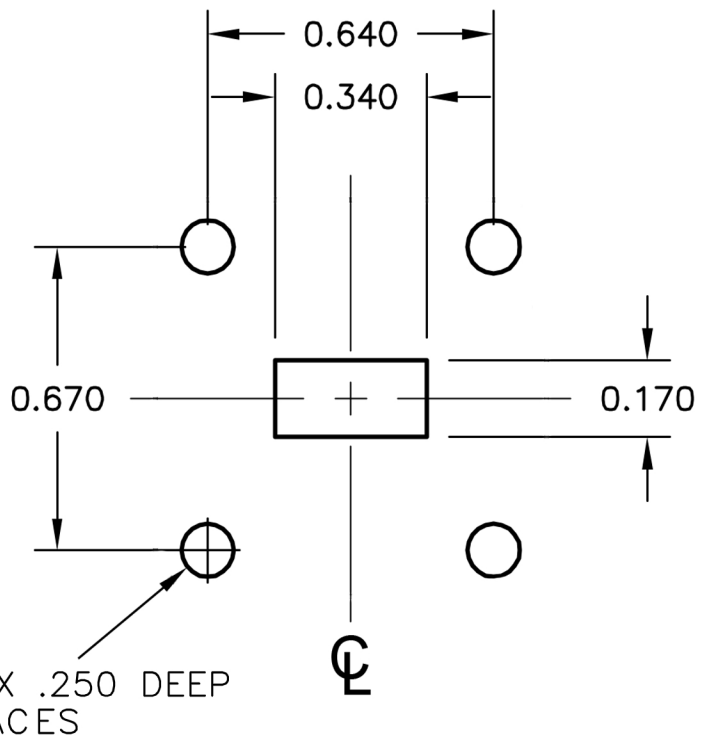
SHEET 1 OF 1

D

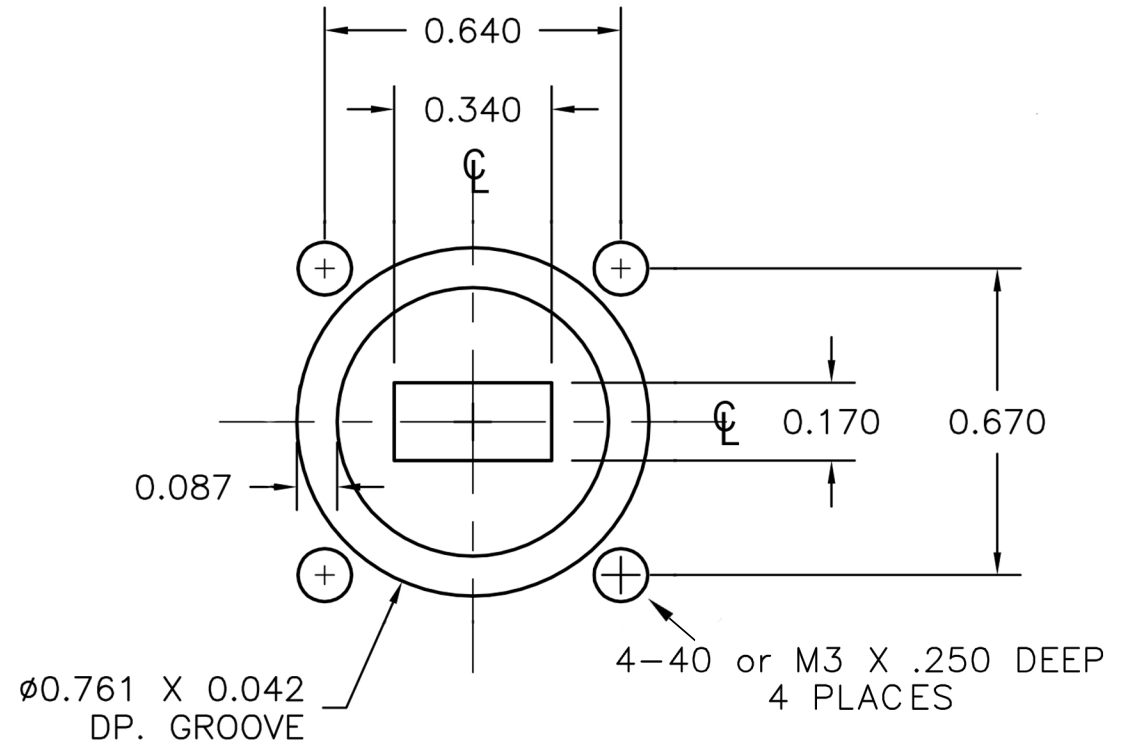
C

B

A



WR34 COVER FLANGE (UGF or UBR)
ORDER CODE: AST34F or AST34FM (METRIC)



WR34 GROOVED FLANGE (UGG or PBR)
ORDER CODE: AST340 or AST340M (METRIC)

BREAK ALL CORNERS AND SHARP EDGES

REVISIONS		APPROVALS			
SYM	DESCRIPTION	DATE	ENGRG	PROD	Q.A.

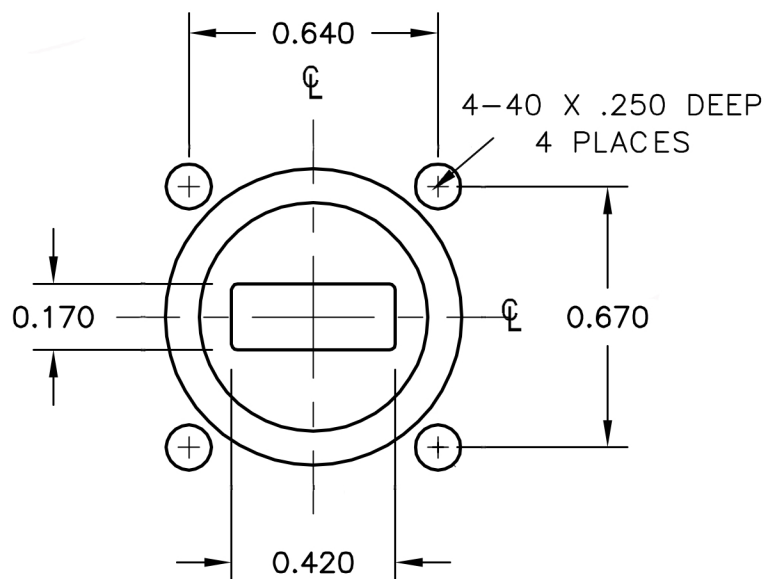
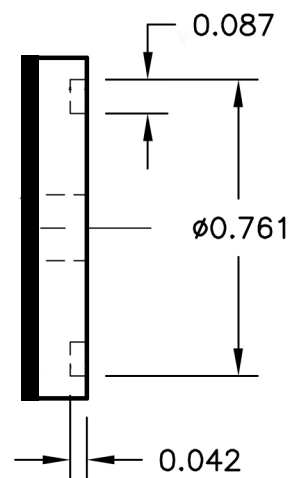
PROPRIETARY INFORMATION
THIS DOCUMENT CONTAINS PROPRIETARY INFORMATION WHICH SHALL NOT BE REPRODUCED, TRANSFERRED TO OTHER DOCUMENTS, DISCLOSED TO OTHERS, USED FOR MANUFACTURING OR ANY OTHER PURPOSE WITHOUT PRIOR WRITTEN PERMISSION FROM AST.

UNLESS OTHERWISE SPECIFIED	DRAWN	MC	05/27/2017
FRACTIONAL ± 1/32 DECIMAL .XXX ± .010 ANGULAR .XX ± .020 ± 1/2°	CHECKER		
DO NOT SCALE	MECH. ENGR.		
MATERIAL: NOTED SPEC:	ELEC. ENGR.		
FINISH: NOTED SPEC:	PROJ. ENGR.		
	CHIEF ENGR.		

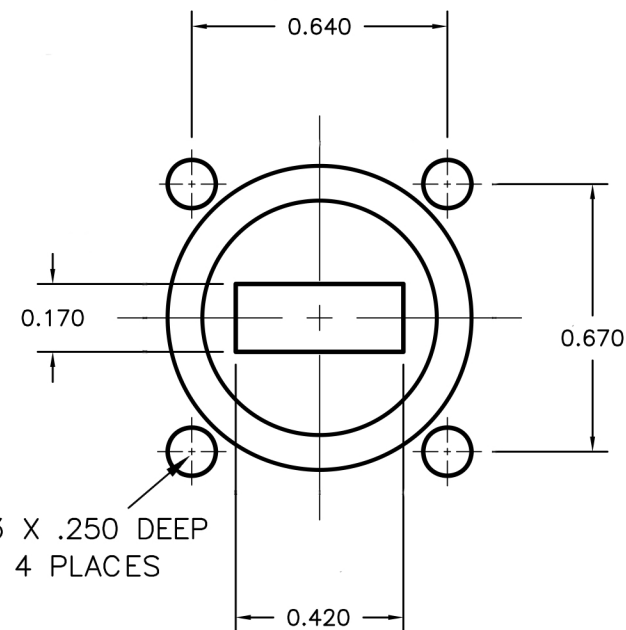
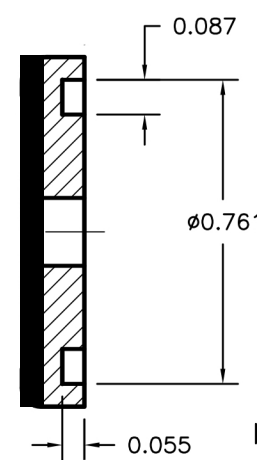
WR34 FLANGES	SCALE
--------------	-------

AST MICROWAVE
754 Fortune Crescent
Kingston, ON
K7P 2T3, Canada
613-384-3939

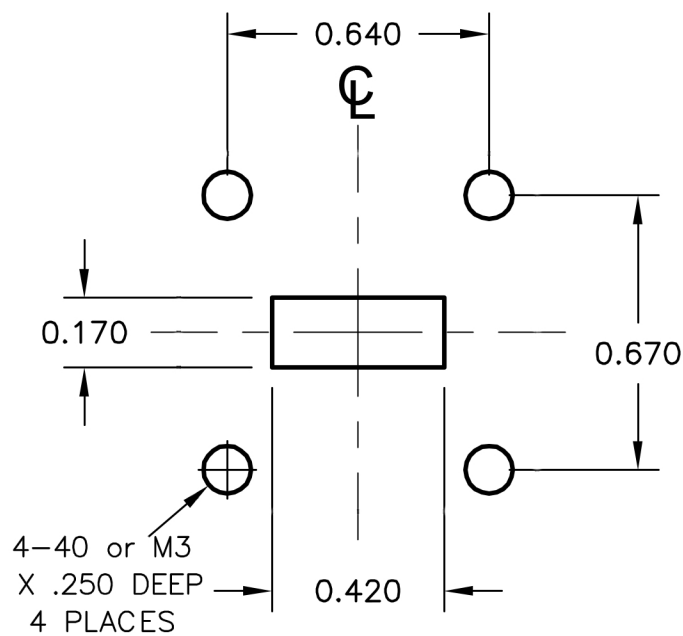
SHEET 1 OF 1



WR42 GROOVED FLANGE (UGG)
ORDER CODE: AST420



WR42 GROOVED FLANGE METRIC (PBR)
ORDER CODE: AST420M



WR42 COVER FLANGE (UGF or UBR)
ORDER CODE: AST42F or AST42FM (METRIC)

A

REVISIONS		APPROVALS			
SYM	DESCRIPTION	DATE	ENGRG	PROD	Q.A.

PROPRIETARY INFORMATION
THIS DOCUMENT CONTAINS PROPRIETARY INFORMATION WHICH SHALL NOT BE REPRODUCED, TRANSFERRED TO OTHER DOCUMENTS, DISCLOSED TO OTHERS, USED FOR MANUFACTURING OR ANY OTHER PURPOSE WITHOUT PRIOR WRITTEN PERMISSION FROM AST.

BREAK ALL CORNERS AND SHARP EDGES

UNLESS OTHERWISE SPECIFIED	DRAWN	MC	05/27/2017
FRACTIONAL ± 1/32	CHECKER		
DECIMAL .XXX ± .010	MECH. ENGR.		
.XX ± .020	ELEC. ENGR.		
ANGULAR ± 1/2°	PROJ. ENGR.		
DO NOT SCALE	CHIEF ENGR.		
MATERIAL: NOTED SPEC:			
FINISH: NOTED SPEC:			

WR42 FLANGES		SCALE	

AST MICROWAVE
754 Fortune Crescent
Kingston, ON
K7P 2T3, Canada
613-384-3939

1

2

3

4

5

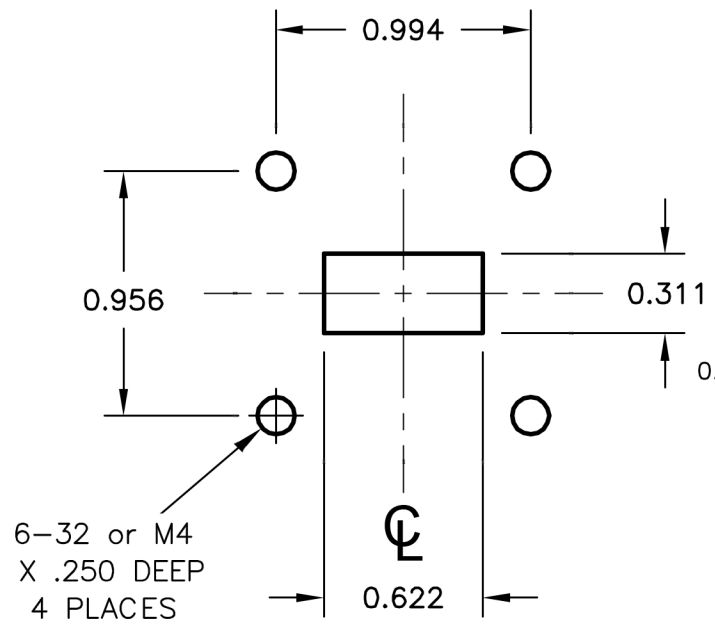
6

D

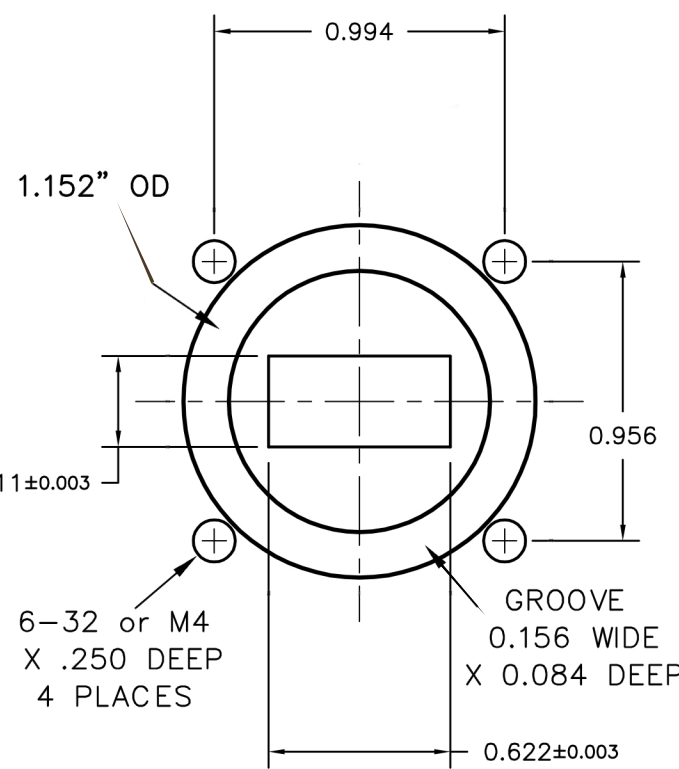
C

B

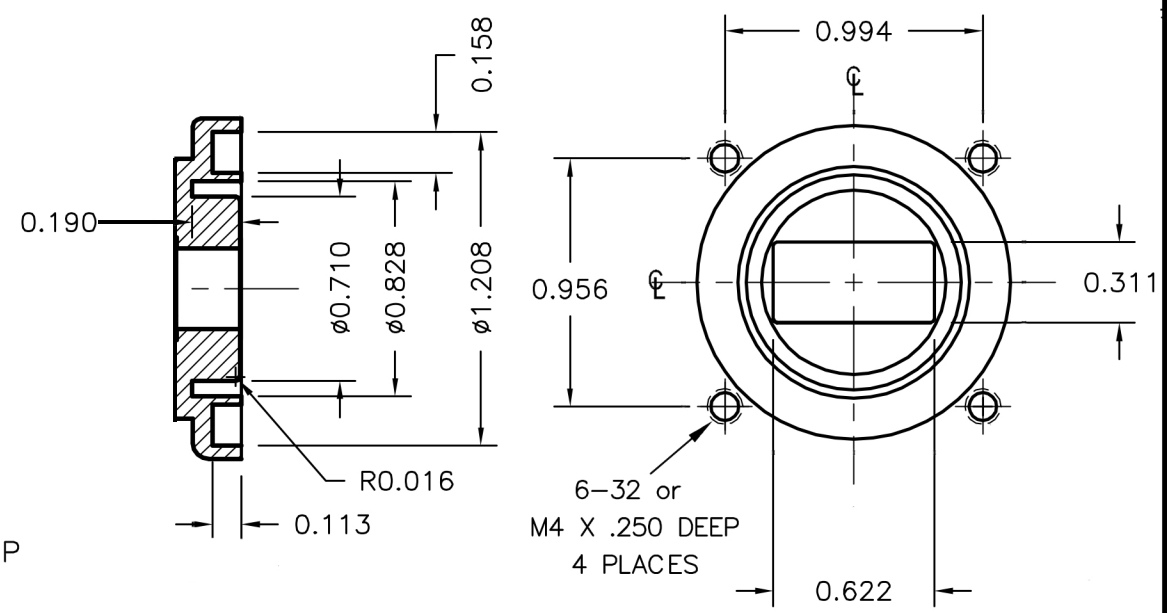
A



WR62 COVER FLANGE (UGF or UBR)
ORDER CODE: AST62F or AST62FM (METRIC)



WR62 GROOVED FLANGE (UGG or PBR)
ORDER CODE: AST620 or AST620M



WR62 CHOKE FLANGE
ORDER CODE: AST62C or AST62CM (METRIC)

REVISIONS		APPROVALS			
SYM	DESCRIPTION	DATE	ENGRG	PROD	Q.A.

PROPRIETARY INFORMATION
THIS DOCUMENT CONTAINS PROPRIETARY INFORMATION WHICH SHALL NOT BE REPRODUCED, TRANSFERRED TO OTHER DOCUMENTS, DISCLOSED TO OTHERS, USED FOR MANUFACTURING OR ANY OTHER PURPOSE WITHOUT PRIOR WRITTEN PERMISSION FROM AST.

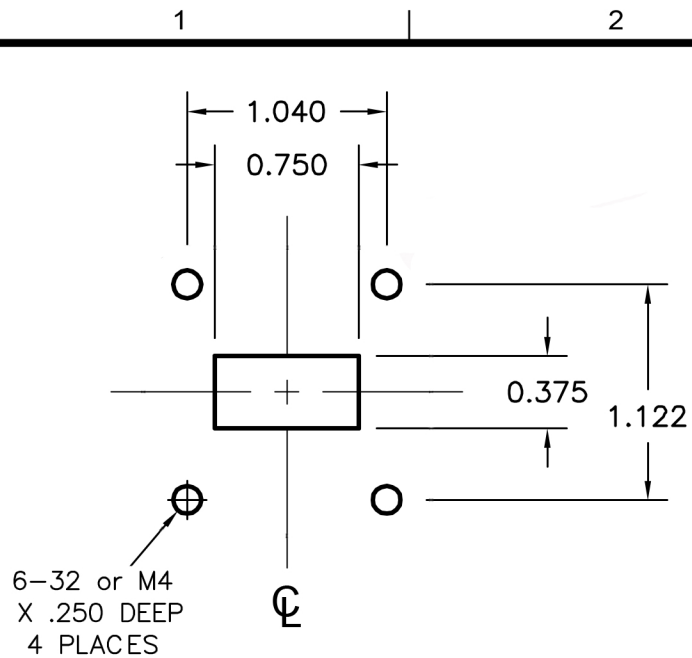
BREAK ALL CORNERS AND SHARP EDGES

UNLESS OTHERWISE SPECIFIED	DRAWN	MC	05/27/2017
FRACTIONAL ± 1/32	CHECKER		
DECIMAL .XXX ± .010	MECH. ENGR.		
ANGULAR .XX ± .020	ELEC. ENGR.		
DO NOT SCALE	PROJ. ENGR.		
MATERIAL: NOTED SPEC:	CHIEF ENGR.		
FINISH: NOTED SPEC:			

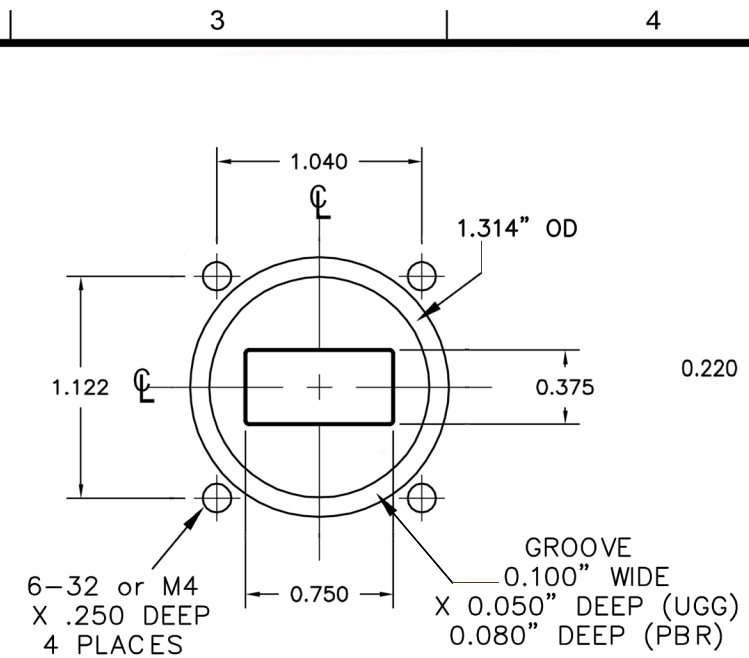
WR62 FLANGES

SCALE

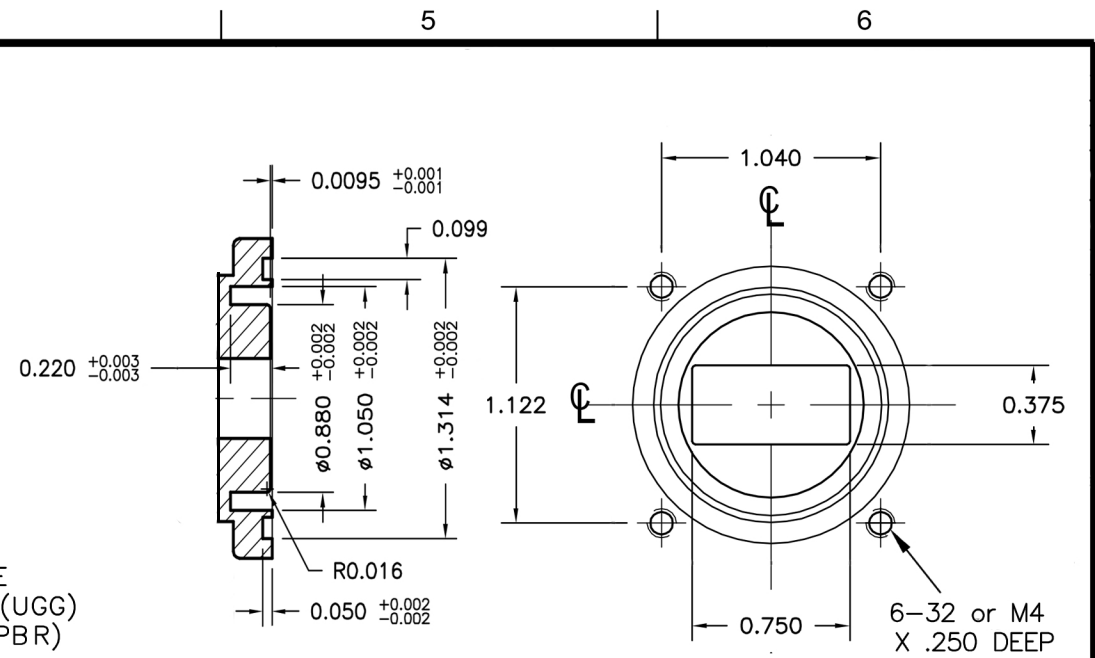




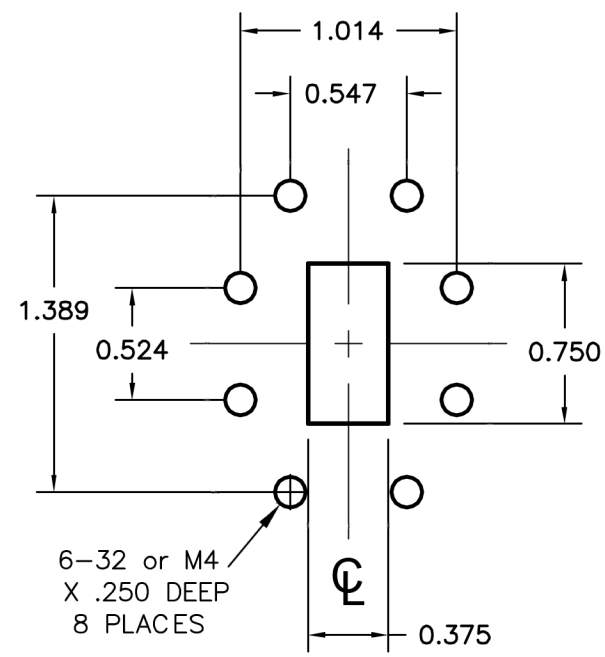
WR75 COVER FLANGE (UGF or UBR)
ORDER CODE: AST75F or AST75FM (METRIC)



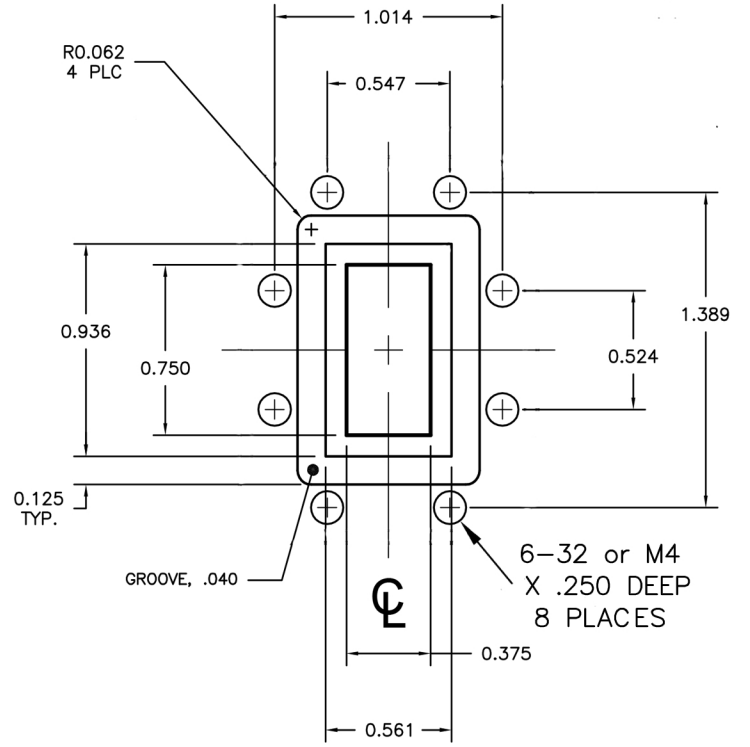
WR75 GROOVED FLANGE (UGG or PBR)
ORDER CODE: AST750 or AST750M (METRIC)



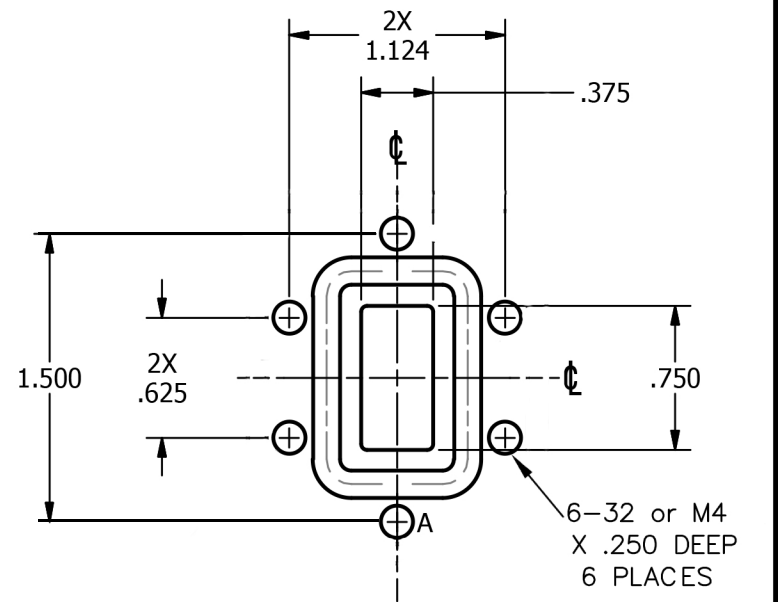
WR75 CHOKE FLANGE
ORDER CODE: AST75K or AST75KM (METRIC)



WR75 CPR FLANGE (CPRF or CPRFM)
ORDER CODE: AST75R or AST75RM (METRIC)



WR75 CPR GROOVED FLANGE (CPRG or CPRGM)
ORDER CODE: AST75G or AST75GM (METRIC)



WR75 PDR FLANGE (PDR or PDRM)
ORDER CODE: AST75P or AST75PM (METRIC)

REVISIONS		APPROVALS			
SYM	DESCRIPTION	DATE	ENGRG	PROD	Q.A.

PROPRIETARY INFORMATION
THIS DOCUMENT CONTAINS PROPRIETARY INFORMATION WHICH SHALL NOT BE REPRODUCED, TRANSFERRED TO OTHER DOCUMENTS, DISCLOSED TO OTHERS, USED FOR MANUFACTURING OR ANY OTHER PURPOSE WITHOUT PRIOR WRITTEN PERMISSION FROM AST.

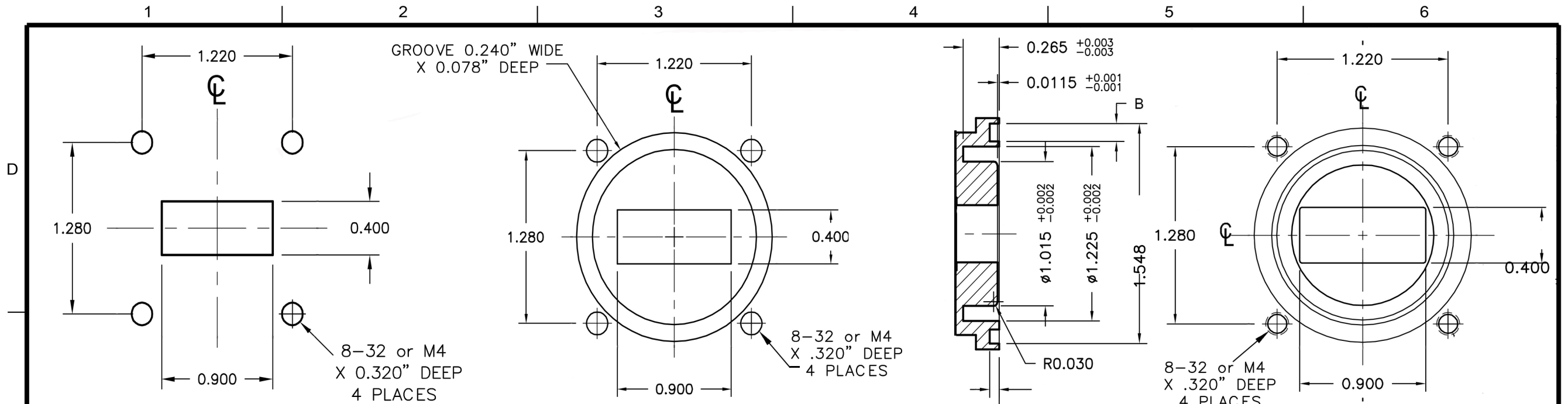
BREAK ALL CORNERS AND SHARP EDGES

UNLESS OTHERWISE SPECIFIED	DRAWN	MC	05/27/2017
FRACTIONAL ± 1/32 DECIMAL .XXX ± .010 .XX ± .020 ANGULAR ± 1/2°	CHECKER		
DO NOT SCALE	MECH. ENGR.		
MATERIAL: NOTED SPEC:	ELEC. ENGR.		
FINISH: NOTED SPEC:	PROJ. ENGR.		
	CHIEF ENGR.		

WR75 FLANGES

SCALE

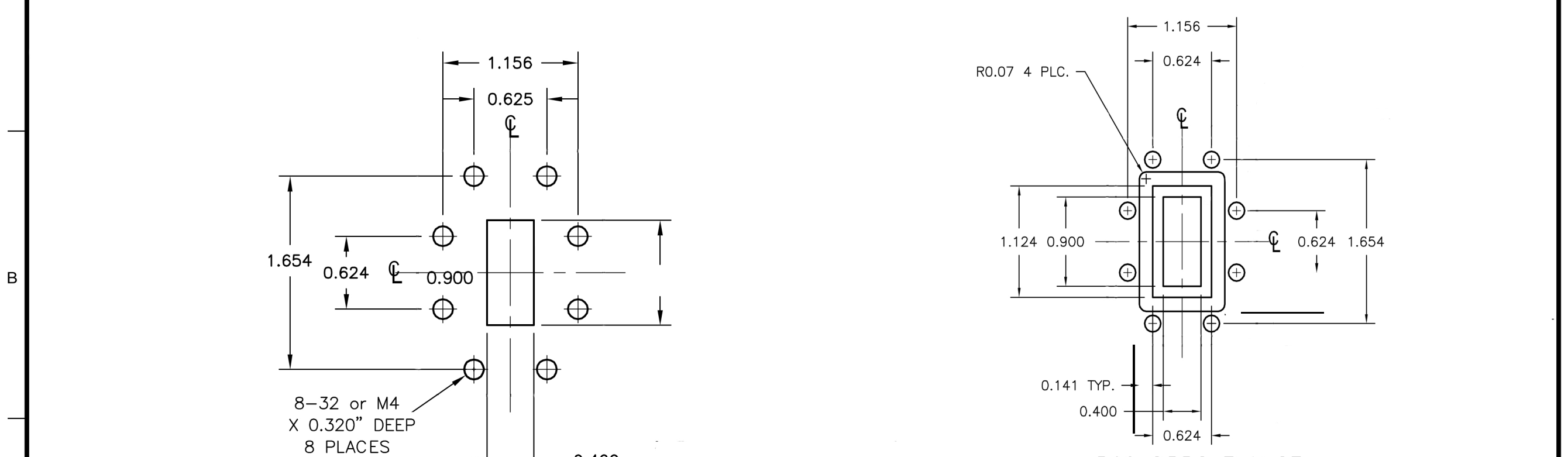




WR90 COVER FLANGE (UGF or UBR)
ORDER CODE: AST90F or AST90FM (METRIC)

WR90 GROOVED FLANGE (UGG or PBR)
ORDER CODE: AST90OM or AST90ORM

WR90 CHOKE FLANGE
ORDER CODE: AST90C or AST90CM (METRIC)



WR90 CPR FLANGE
ORDER CODE: AST90R or AST90RM (METRIC)

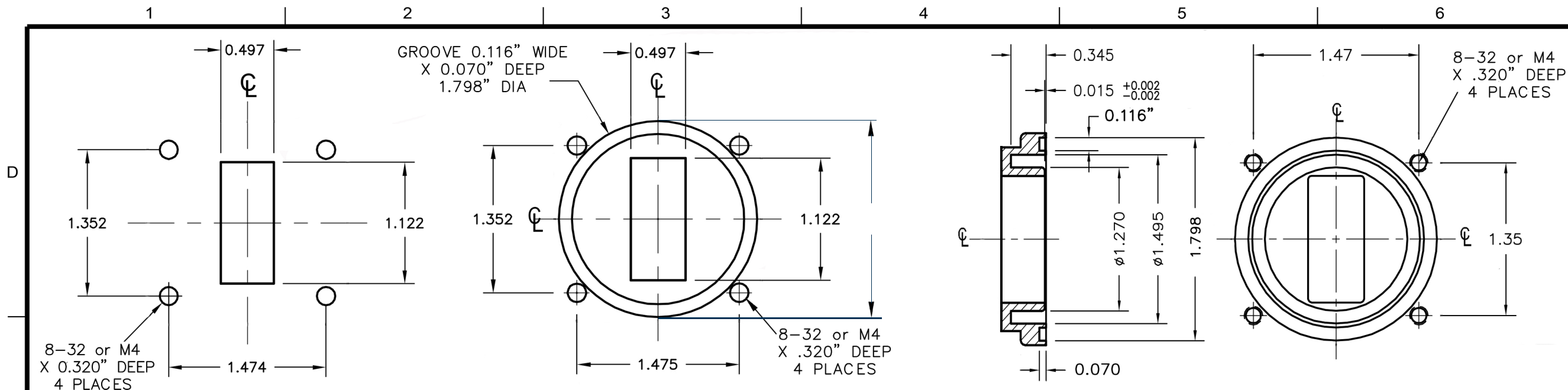
WR90 CPRG FLANGE
ORDER CODE: AST90G or AST90GM (METRIC)

REVISIONS		APPROVALS			
SYM	DESCRIPTION	DATE	ENGRG	PROD	Q.A.

PROPRIETARY INFORMATION
THIS DOCUMENT CONTAINS PROPRIETARY INFORMATION WHICH SHALL NOT BE REPRODUCED, TRANSFERRED TO OTHER DOCUMENTS, DISCLOSED TO OTHERS, USED FOR MANUFACTURING OR ANY OTHER PURPOSE WITHOUT PRIOR WRITTEN PERMISSION FROM AST.

UNLESS OTHERWISE SPECIFIED		DRAWN	MC	05/27/2017	WR90 FLANGES	 754 Fortune Crescent Kingston, ON K7P 2T3, Canada 613-384-3939
FRACTIONAL ± 1/32	DO NOT SCALE	CHECKER				
DECIMAL .XXX ± .010		MECH. ENGR.				
XX ± .020		ELEC. ENGR.				
ANGULAR ± 1/2°		PROJ. ENGR.				
MATERIAL: NOTED SPEC:	FINISH: NOTED SPEC:	CHIEF ENGR.			SCALE	SHEET 1 OF 1

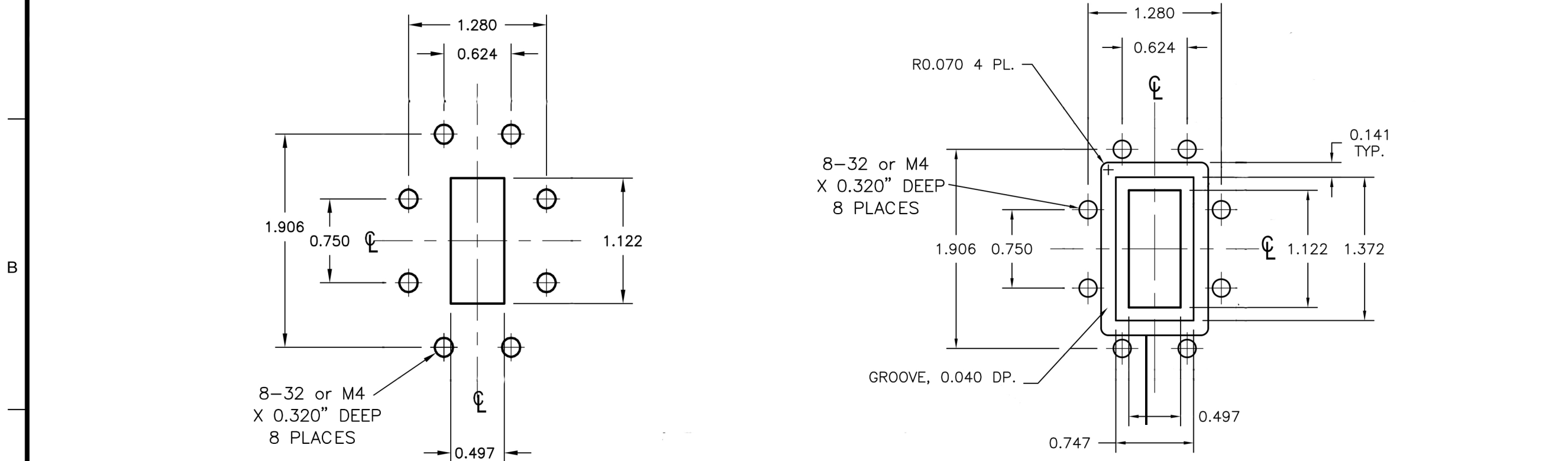
BREAK ALL CORNERS AND SHARP EDGES



WR112 COVER FLANGE (UGF or UBR)
ORDER CODE: AST112F or AST112FM (METRIC)

WR112 GROOVED FLANGE (UGG or PBR)
ORDER CODE: AST112OM or AST112OM

WR112 CHOKE FLANGE
ORDER CODE: AST112C or AST112CM (METRIC)



WR112 CPR FLANGE
ORDER CODE: AST112R or AST112RM (METRIC)

WR112 CPRG FLANGE
ORDER CODE: AST112G or AST112GM (METRIC)

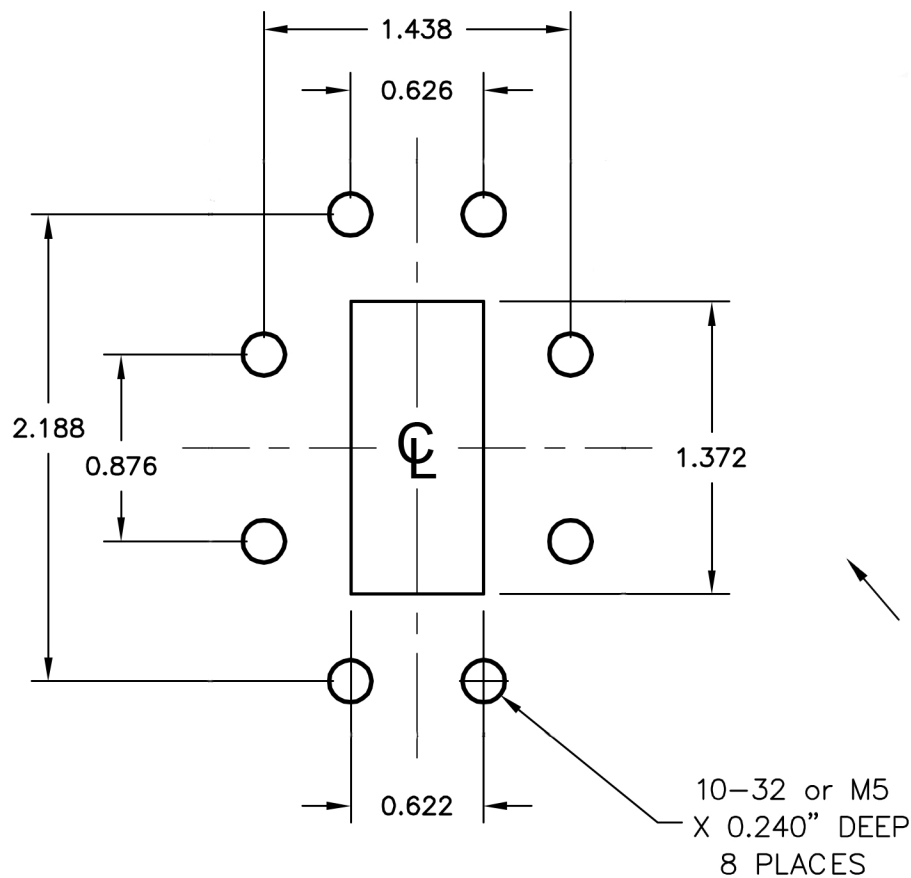
REVISIONS		APPROVALS			
SYM	DESCRIPTION	DATE	ENGRG	PROD	Q.A.

PROPRIETARY INFORMATION
THIS DOCUMENT CONTAINS PROPRIETARY INFORMATION WHICH SHALL NOT BE REPRODUCED, TRANSFERRED TO OTHER DOCUMENTS, DISCLOSED TO OTHERS, USED FOR MANUFACTURING OR ANY OTHER PURPOSE WITHOUT PRIOR WRITTEN PERMISSION FROM AST.

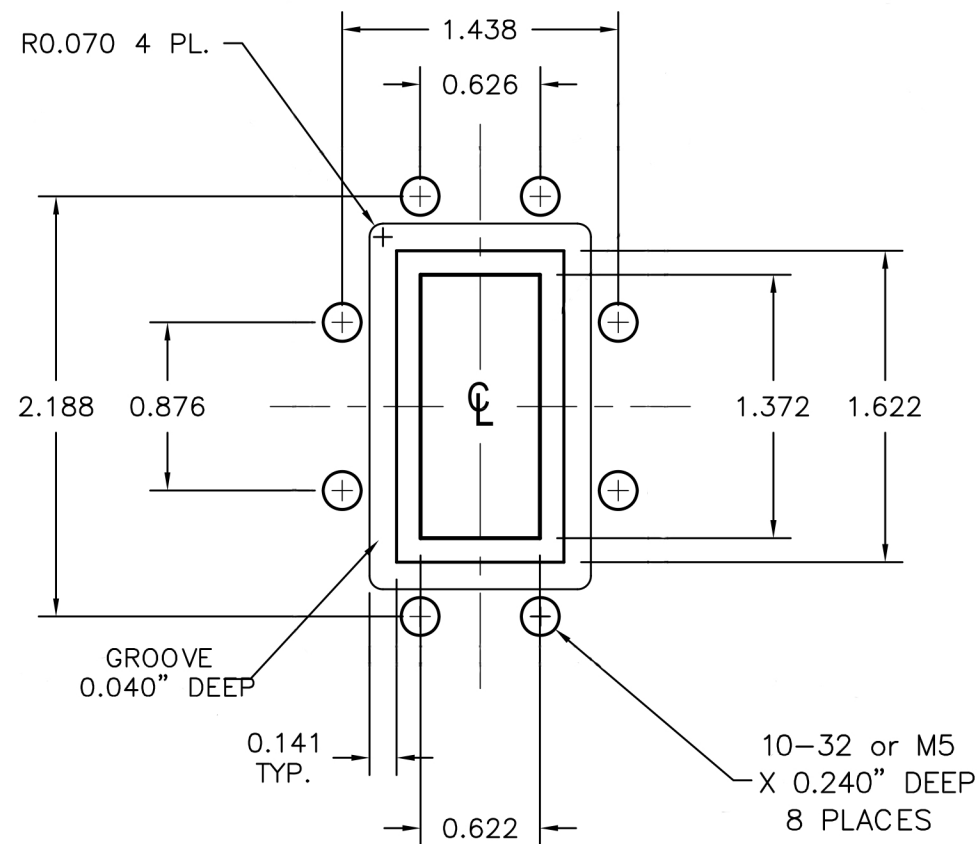
BREAK ALL CORNERS AND SHARP EDGES

UNLESS OTHERWISE SPECIFIED	DRAWN	MC	05/27/2017	WR112 FLANGES	 754 Fortune Crescent Kingston, ON K7P 2T3, Canada 613-384-3939
FRACTIONAL ± 1/32	CHECKER				
DECIMAL .XXX ± .010	MECH. ENGR.				
ANGULAR .XX ± .020	ELEC. ENGR.				
DO NOT SCALE	PROJ. ENGR.				
MATERIAL: NOTED SPEC:	CHIEF ENGR.			SCALE	SHEET 1 OF 1
FINISH: NOTED SPEC:					

8-32 or M4
X .320" DEEP
4 PLACES



WR137 CPR FLANGE
ORDER CODE: AST137R or AST137RM (METRIC)



WR137 CPRG FLANGE
ORDER CODE: AST137G or AST137GM (METRIC)

A

REVISIONS		APPROVALS			
SYM	DESCRIPTION	DATE	ENGRG	PROD	Q.A.

PROPRIETARY INFORMATION
THIS DOCUMENT CONTAINS PROPRIETARY INFORMATION WHICH SHALL NOT BE REPRODUCED, TRANSFERRED TO OTHER DOCUMENTS, DISCLOSED TO OTHERS, USED FOR MANUFACTURING OR ANY OTHER PURPOSE WITHOUT PRIOR WRITTEN PERMISSION FROM AST.

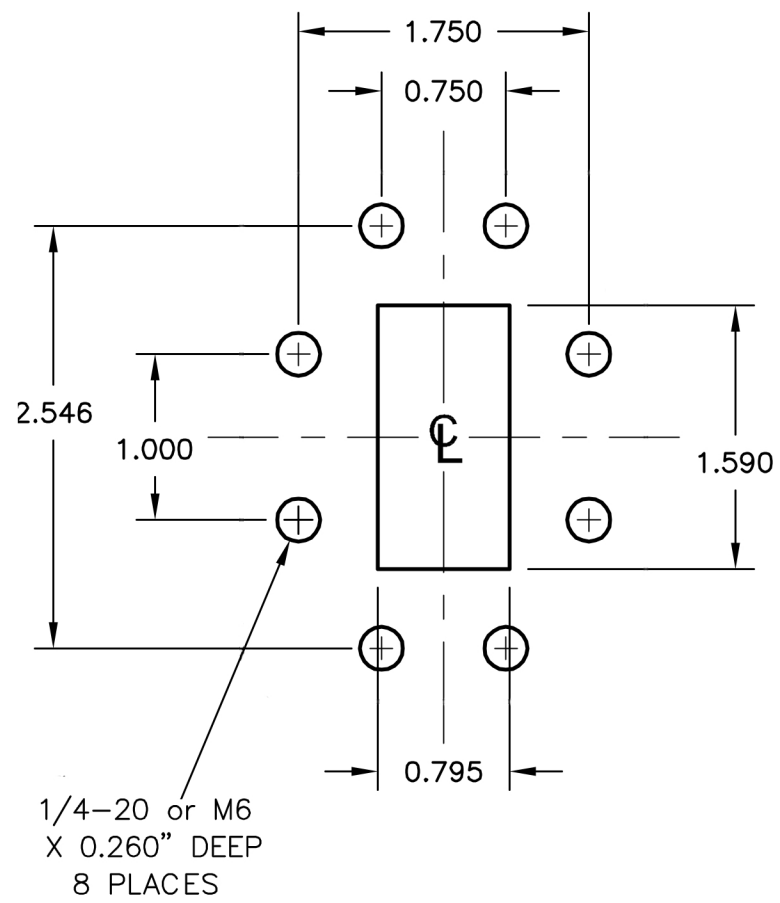
BREAK ALL CORNERS AND SHARP EDGES

UNLESS OTHERWISE SPECIFIED	DRAWN	MC	05/27/2017
FRACTIONAL ± 1/32	CHECKER		
DECIMAL .XXX ± .010	MECH. ENGR.		
.XX ± .020	ELEC. ENGR.		
ANGULAR ± 1/2°	PROJ. ENGR.		
	CHIEF ENGR.		
MATERIAL: NOTED SPEC:			
FINISH: NOTED SPEC:			

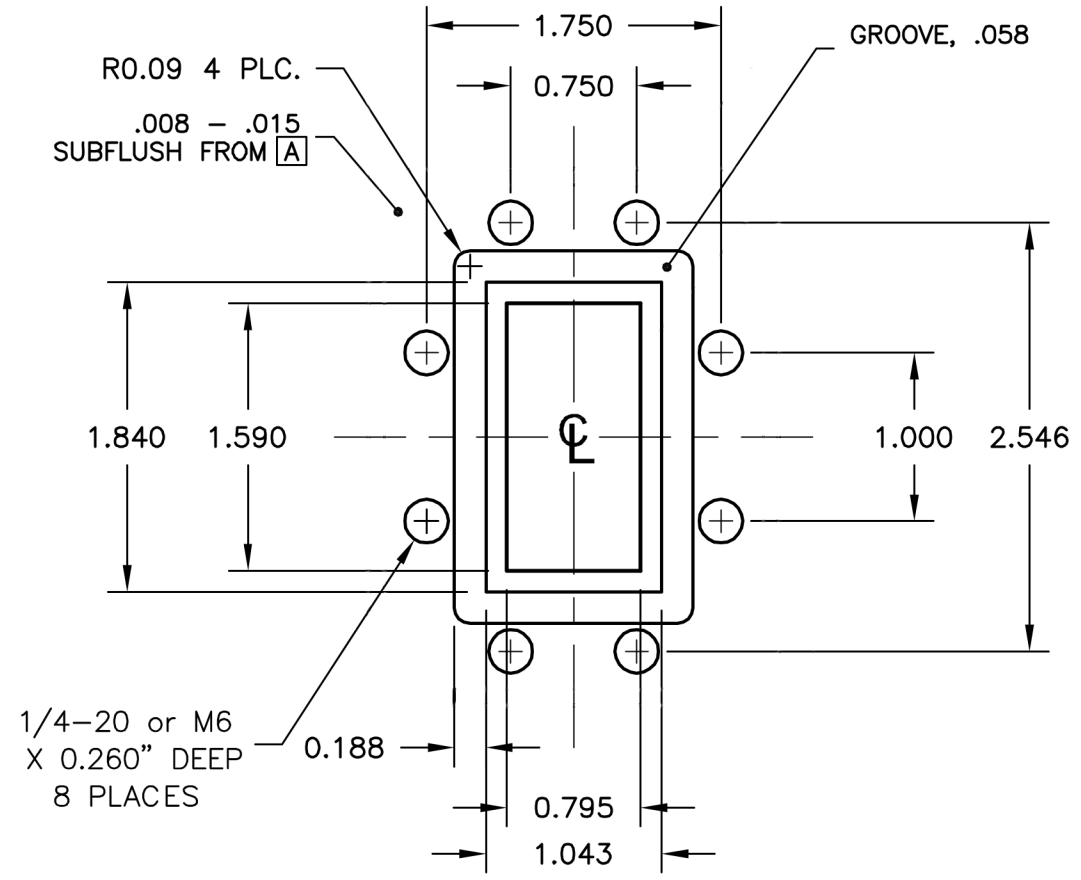
WR137 FLANGES		SCALE	

AST MICROWAVE
754 Fortune Crescent
Kingston, ON
K7P 2T3, Canada
613-384-3939

D
C
B
A



WR159 CPR FLANGE
ORDER CODE: AST159R or AST159RM (METRIC)



WR159 CPRG FLANGE
ORDER CODE: AST159G or AST159GM (METRIC)

REVISIONS		APPROVALS			
SYM	DESCRIPTION	DATE	ENGRG	PROD	Q.A.

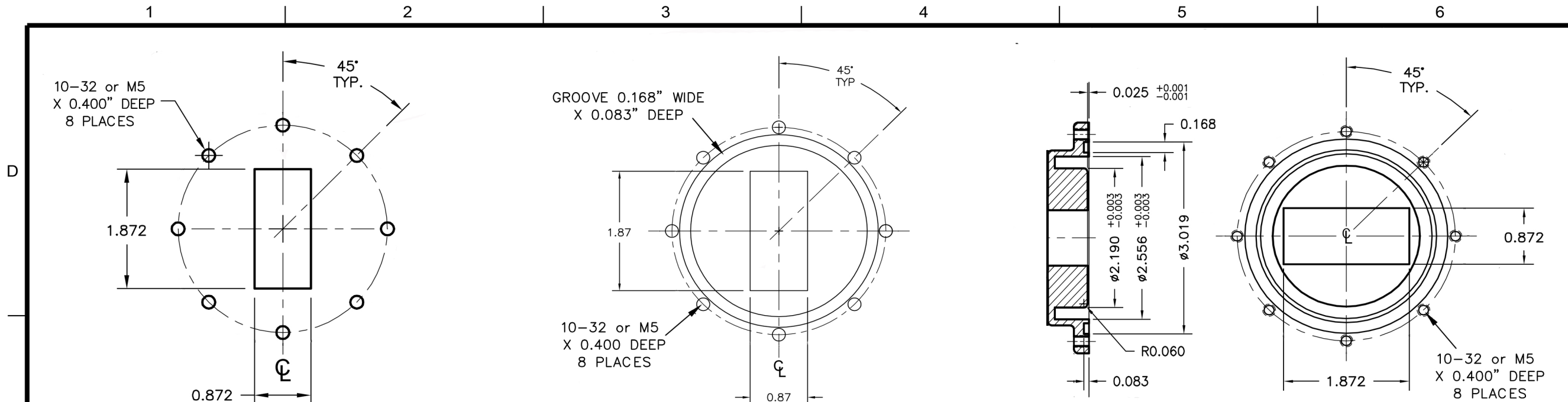
PROPRIETARY INFORMATION
THIS DOCUMENT CONTAINS PROPRIETARY INFORMATION WHICH SHALL NOT BE REPRODUCED, TRANSFERRED TO OTHER DOCUMENTS, DISCLOSED TO OTHERS, USED FOR MANUFACTURING OR ANY OTHER PURPOSE WITHOUT PRIOR WRITTEN PERMISSION FROM AST.

BREAK ALL CORNERS AND SHARP EDGES

UNLESS OTHERWISE SPECIFIED	DRAWN	MC	05/27/2017
FRACTIONAL ± 1/32	CHECKER		
DECIMAL .XXX ± .010	MECH. ENGR.		
ANGULAR .XX ± .020	ELEC. ENGR.		
DO NOT SCALE	PROJ. ENGR.		
MATERIAL: NOTED SPEC:	CHIEF ENGR.		
FINISH: NOTED SPEC:			

WR159 FLANGES	
SCALE	

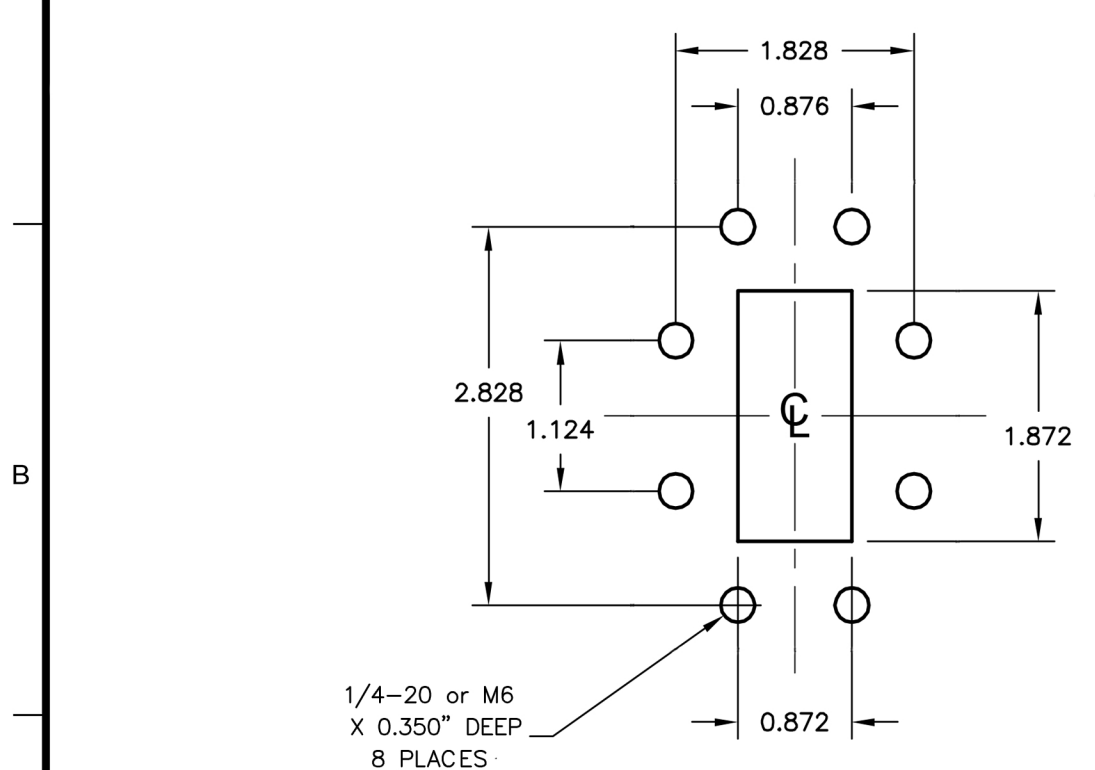




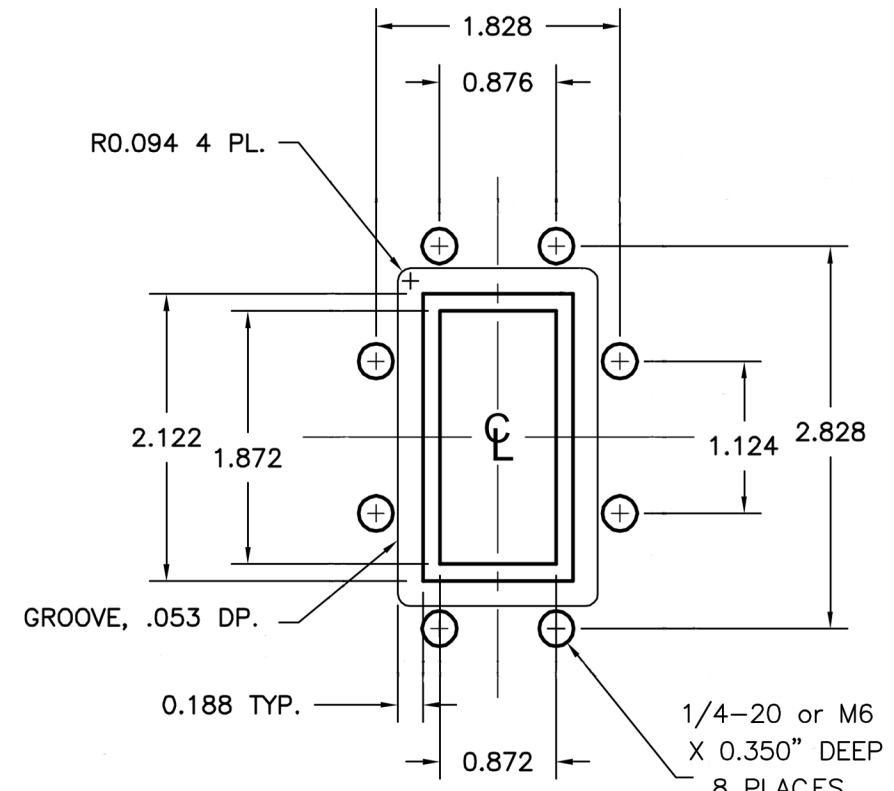
WR187 COVER FLANGE (UGF or UBR)
ORDER CODE: AST187F or AST187FM (METRIC)

WR187 GROOVED FLANGE (UGG or PBR)
ORDER CODE: AST1870 or AST1870M (METRIC)

WR187 CHOKE FLANGE
ORDER CODE: AST187C or AST187CM (METRIC)



WR187 CPRF FLANGE
ORDER CODE: AST187R or AST187RM (METRIC)



WR187 CPRG FLANGE
ORDER CODE: AST187G or AST187GM (METRIC)

REVISIONS		APPROVALS			
SYM	DESCRIPTION	DATE	ENGRG	PROD	Q.A.

PROPRIETARY INFORMATION
THIS DOCUMENT CONTAINS PROPRIETARY INFORMATION WHICH SHALL NOT BE REPRODUCED, TRANSFERRED TO OTHER DOCUMENTS, DISCLOSED TO OTHERS, USED FOR MANUFACTURING OR ANY OTHER PURPOSE WITHOUT PRIOR WRITTEN PERMISSION FROM AST.

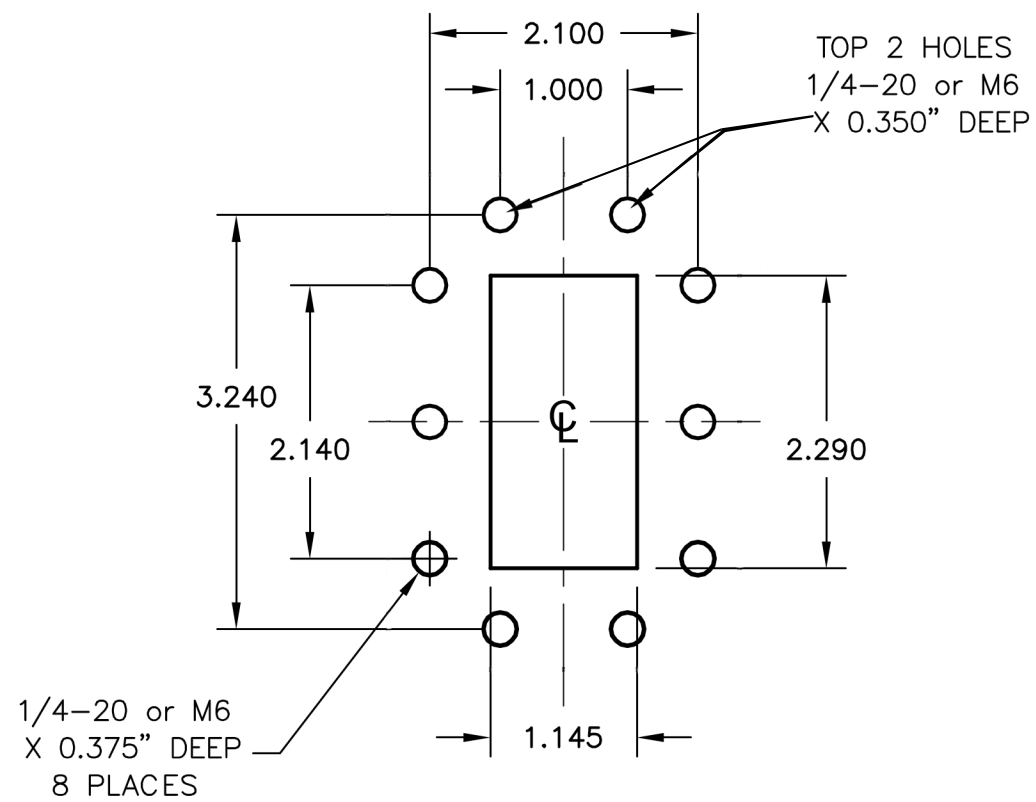
BREAK ALL CORNERS AND SHARP EDGES

UNLESS OTHERWISE SPECIFIED	DRAWN	MC	05/27/2017
FRACTIONAL ± 1/32	CHECKER		
DECIMAL .XXX ± .010	MECH. ENGR.		
.XX ± .020	ELEC. ENGR.		
ANGULAR ± 1/2°	PROJ. ENGR.		
	CHIEF ENGR.		
MATERIAL: NOTED SPEC:			
FINISH: NOTED SPEC:			

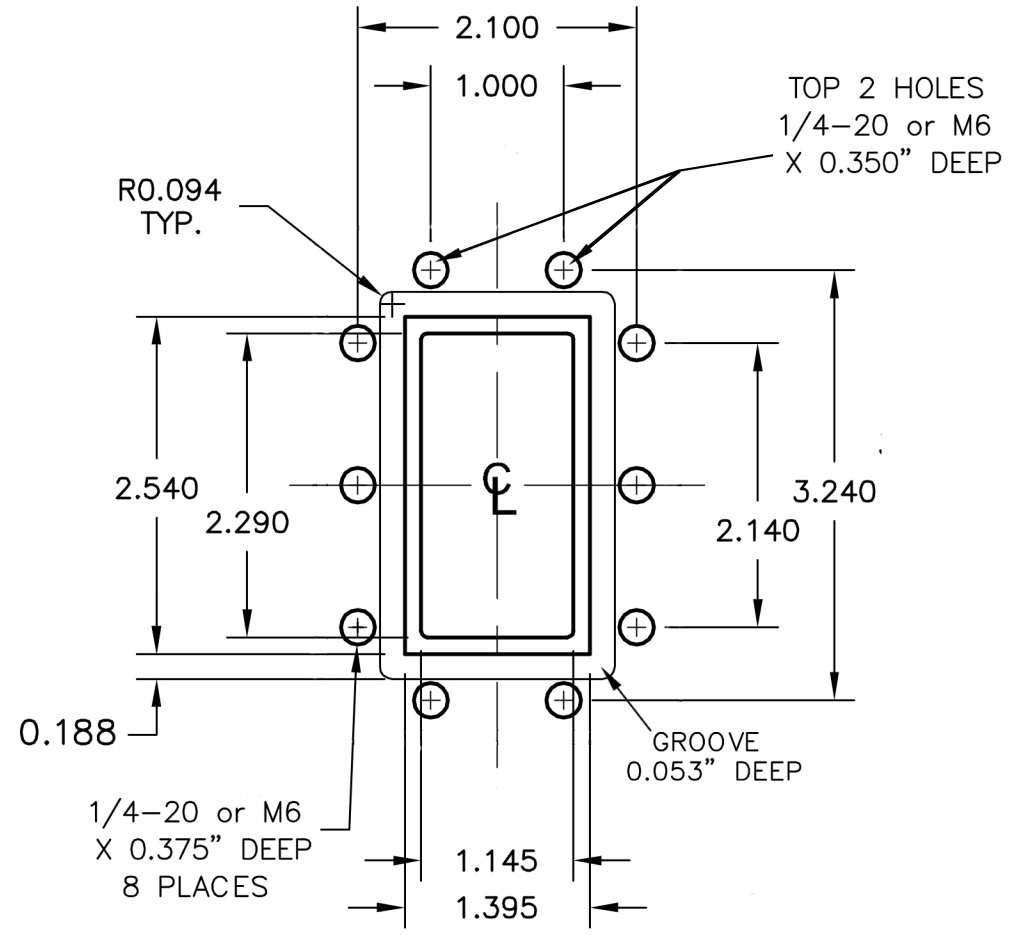
WR187 FLANGES	
SCALE	



D
C
B
A



WR229 CPR FLANGE
ORDER CODE: AST1229R or AST229RM (METRIC)



WR229 CPRG FLANGE
ORDER CODE: AST229G or AST229GM (METRIC)

REVISIONS		APPROVALS			
SYM	DESCRIPTION	DATE	ENGRG	PROD	Q.A.

PROPRIETARY INFORMATION
THIS DOCUMENT CONTAINS PROPRIETARY INFORMATION WHICH SHALL NOT BE REPRODUCED, TRANSFERRED TO OTHER DOCUMENTS, DISCLOSED TO OTHERS, USED FOR MANUFACTURING OR ANY OTHER PURPOSE WITHOUT PRIOR WRITTEN PERMISSION FROM AST.

BREAK ALL CORNERS AND SHARP EDGES

UNLESS OTHERWISE SPECIFIED	DRAWN	MC	05/27/2017
FRACTIONAL ± 1/32	CHECKER		
DECIMAL .XXX ± .010	MECH. ENGR.		
.XX ± .020	ELEC. ENGR.		
ANGULAR ± 1/2°	PROJ. ENGR.		
	CHIEF ENGR.		

WR229 FLANGES	
SCALE	



1

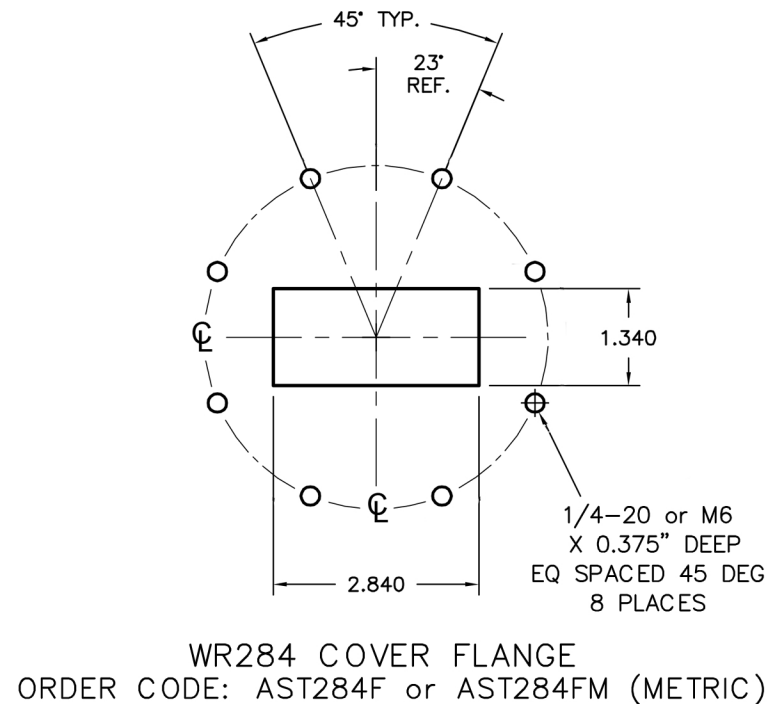
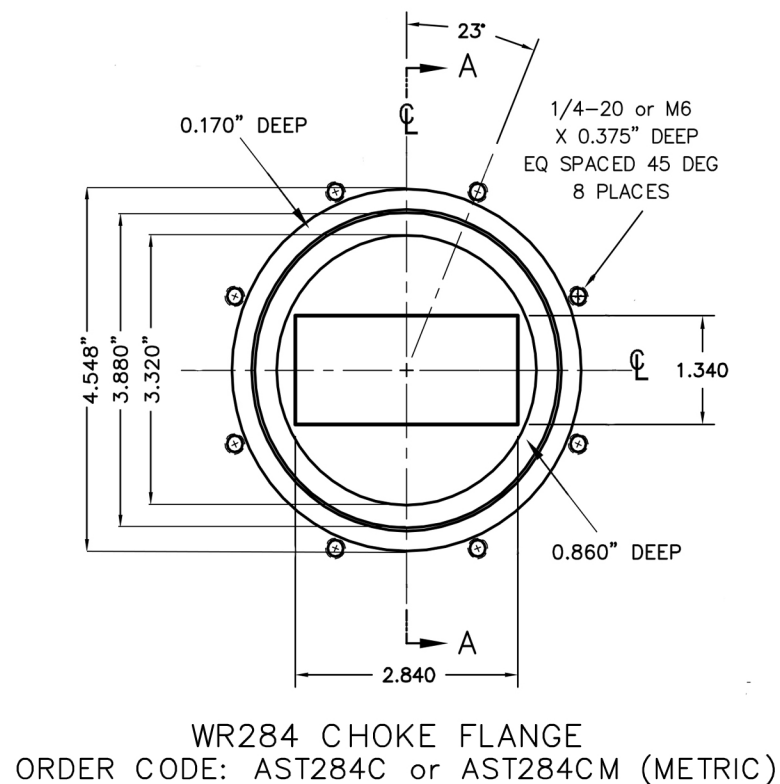
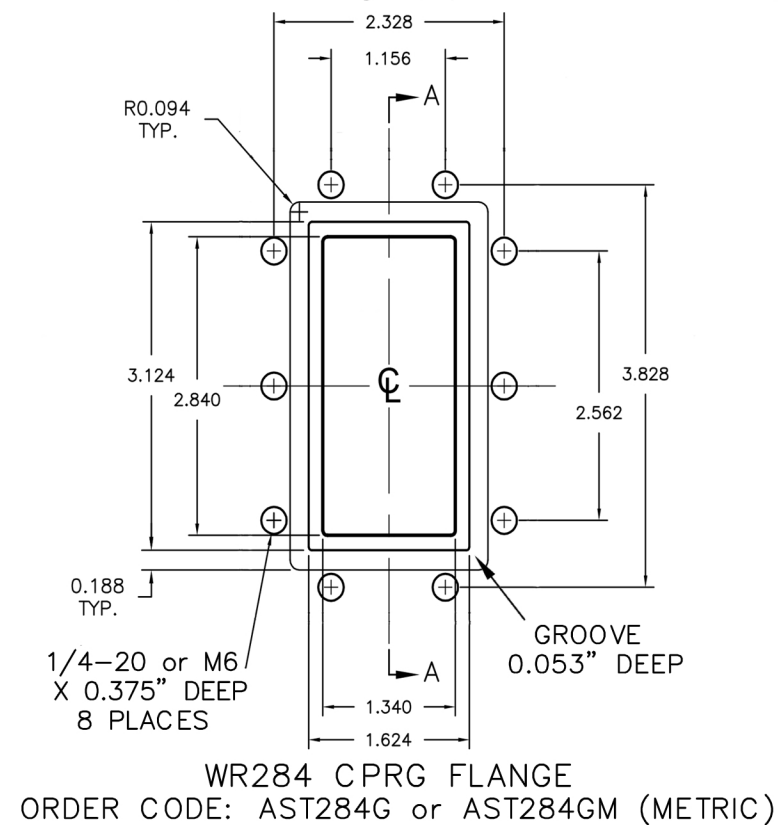
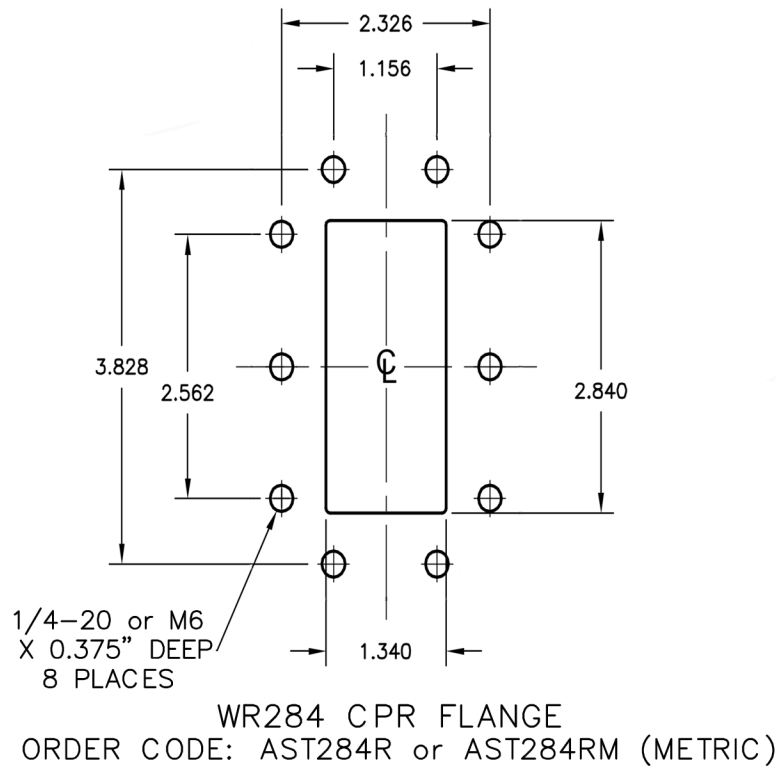
2

3

4

5

6



REVISIONS		APPROVALS			
SYM	DESCRIPTION	DATE	ENGRG	PROD	Q.A.

PROPRIETARY INFORMATION
THIS DOCUMENT CONTAINS PROPRIETARY INFORMATION WHICH SHALL NOT BE REPRODUCED, TRANSFERRED TO OTHER DOCUMENTS, DISCLOSED TO OTHERS, USED FOR MANUFACTURING OR ANY OTHER PURPOSE WITHOUT PRIOR WRITTEN PERMISSION FROM AST.

BREAK ALL CORNERS AND SHARP EDGES

UNLESS OTHERWISE SPECIFIED	DRAWN	MC	05/27/2017
FRACTIONAL ± 1/32	CHECKER		
DECIMAL .XXX ± .010	MECH. ENGR.		
.XX ± .020	ELEC. ENGR.		
ANGULAR ± 1/2°	PROJ. ENGR.		
DO NOT SCALE	CHIEF ENGR.		
MATERIAL: NOTED SPEC:			
FINISH: NOTED SPEC:			

WR284 FLANGES	
SCALE	

