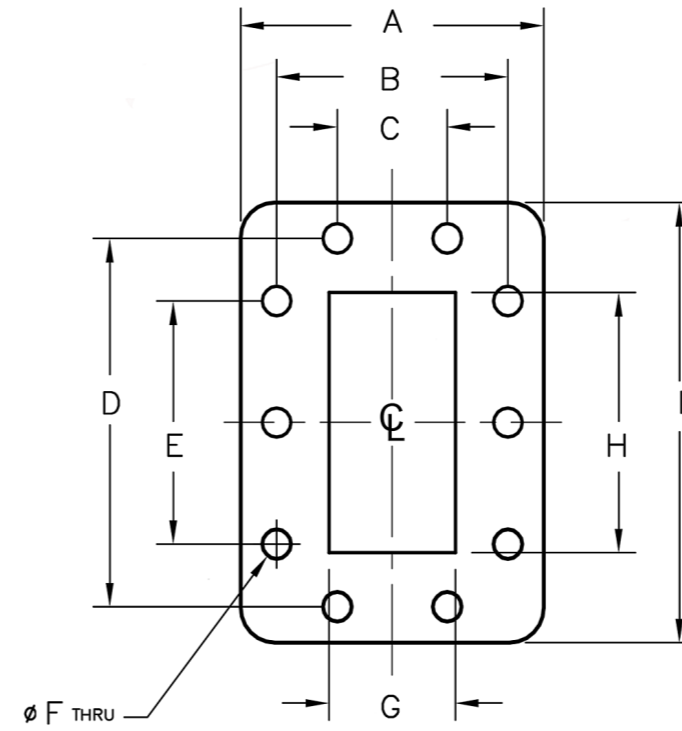
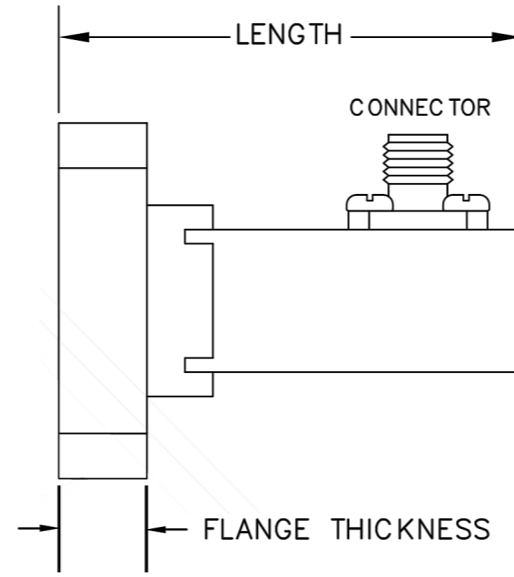
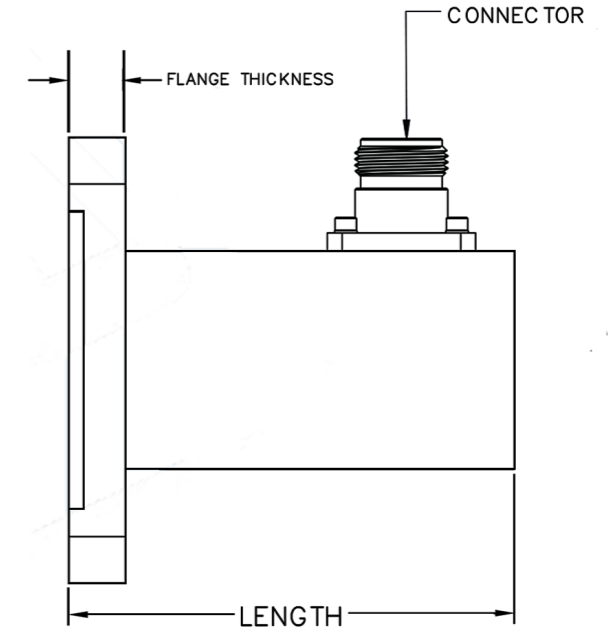


**UG**



**CPR**



Waveguide Size	Frequency	VSWR	Connector	Dim A (in)	Dim B (in)	Dim C (in)	Dim D (in)	Dim E (in)	Dim F (in)	Dim G (in)	Dim H (in)	Dim I (in)	FL Thickness (in)	Length (in)
WR28	26.5 - 40.0 GHz	1.3:1	K (M or F)	0.75 Sq	0.50	0.28	0.53	0.116	0.14	/	/	/	0.190	1.00
WR34	22.0-33.0 GHz	1.06:1	K (M or F)	0.88 Sq	0.640	0.340	0.670	0.116	0.170	/	/	/	0.185	1.00
WR42	18.0-26.5 GHz	1.06:1	SMA (M or F)	0.875 Sq	0.640	0.420	0.670	0.116	0.170	/	/	/	0.185	1.00
WR62	12.4-18.0 GHz	1.03:1	SMA (M or F)	1.31 Sq	0.99	0.620	0.96	0.144	0.31	/	/	/	0.185	1.25
WR75	10.0-15.0 GHz	1.03:1	SMA (M or F)	1.50 Sq	1.040	0.750	1.122	0.144	0.372	/	/	/	0.203	1.25
WR90	8.2-12.4 GHz	1.03:1	SMA (M or F)	1.63 Sq	1.22	0.900	1.280	0.169	0.40	/	/	/	0.203	1.50
WR112 (UG)	7.05-10.0 GHz	1.03:1	SMA, N (M or F)	1.875 Sq	1.352	1.123	1.474	0.172	0.500	/	/	/	0.250	1.50
WR112 (CPR)	7.05-10.0 GHz	1.03:1	SMA, N (M or F)	1.750	1.280	0.624	1.906	0.750	0.169	0.497	1.122	2.50	0.250	1.50
WR137	5.85-8.2 GHz	1.03:1	SMA, N (M or F)	1.940	1.438	0.626	2.188	0.876	0.198	0.622	1.372	2.69	0.250	1.75
WR159	4.9-7.05 GHz	1.03:1	SMA, N (M or F)	2.44	1.750	0.750	2.546	1.000	0.256	0.795	1.590	3.19	0.250	2.00
WR187 (CPR)	3.95-5.85	1.03:1	SMA, N (M or F)	2.50	1.828	0.876	2.828	1.124	0.256	0.872	1.872	3.50	0.250	2.00
WR229	3.3-4.9 GHz	1.03:1	SMA, N (M or F)	2.75	2.100	1.000	3.240	2.140	0.256	1.145	2.290	3.87	0.250	2.25
WR284	2.6-3.95 GHz	1.03:1	SMA, N (M or F)	3.00	2.326	1.156	3.828	2.562	0.256	1.340	2.840	4.50	0.250	3.00
WR340	2.2-3.3 GHz	1.03:1	SMA, N (M or F)	3.750	3.000	1.342	4.688	0.2688	0.266	1.700	3.400	5.440	0.380	3.35